

# Instructions for Download & Installation of SMART Data Software

## Introduction:

The School Measurement, Assessment & Reporting Toolkit (SMART) is a sophisticated software package that enables principals, teachers and senior regional officers to analyse school results from the various testing programs across NSW.

The SMART Data Software package is acquired in 2 stages:

- A. Downloading the analysis software package (this is necessary even if you already have the analysis software, as there are continuous updates made to the package at each release).
- B. Downloading school data into your analysis software package

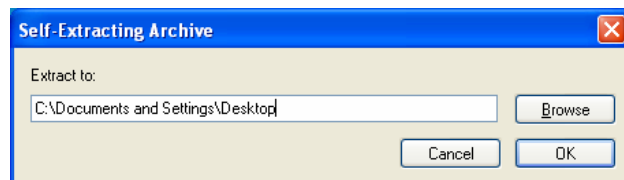
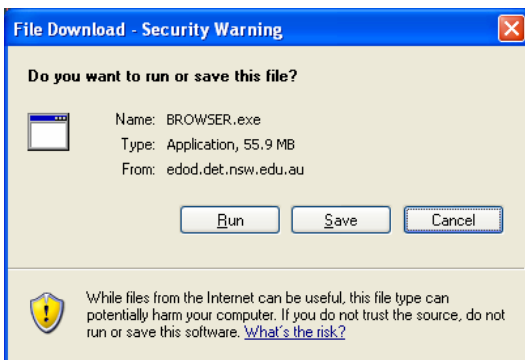
**Before downloading:** Check that you have **Stuffit** if using a Mac or **Winzip** if using a PC.

## Part 1 Downloading/Updating the analysis software package

The package can be downloaded by clicking on the SMART Data Software link found on the right hand section of the Department's intranet homepage or directly through <https://edod.det.nsw.edu.au>

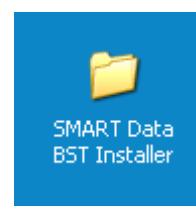
Make sure you have selected the testing program package that you want to download data for by clicking on the **round button** next to the testing program.

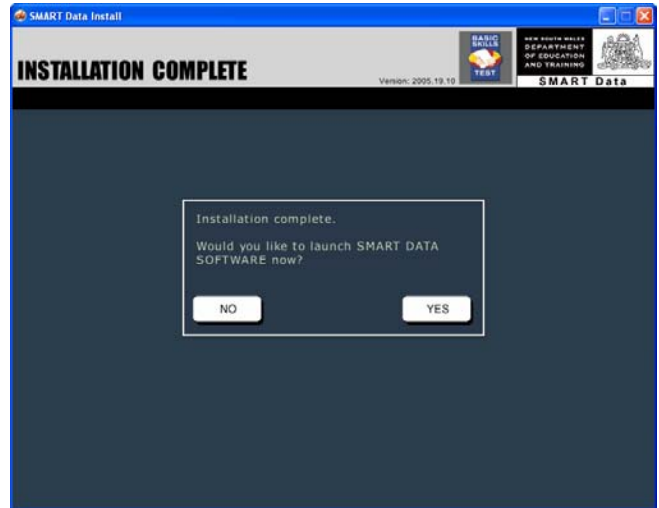
1. Enter the **Web Password** you have been provided and press **OK**. (NB All passwords are case sensitive). If your password doesn't work:
  - a. Are you sure you have the password for 2007?
  - b. Are you sure you are not pressing CAPS LOCK or SHIFT?
  - c. Is the NUM LOCK light on?
  - d. Have you chosen the correct program to download from the list? (The default program changes during the year as different packages are released.)
2. Select the appropriate platform (Windows or Macintosh) of the Browser you are downloading and click **DOWNLOAD**.
3. Click **SAVE** to save the **BROWSER** file to your Desktop. This download may take some time. When the download is complete, a **Self-Extracting Archive** window will appear, as shown below.



**Note:** If the Self-Extracting Archive does not launch, navigate to your desktop and double click on the **BROWSER.exe** (PC) or **BROWSER.sitx** (MAC) link as shown on the right.

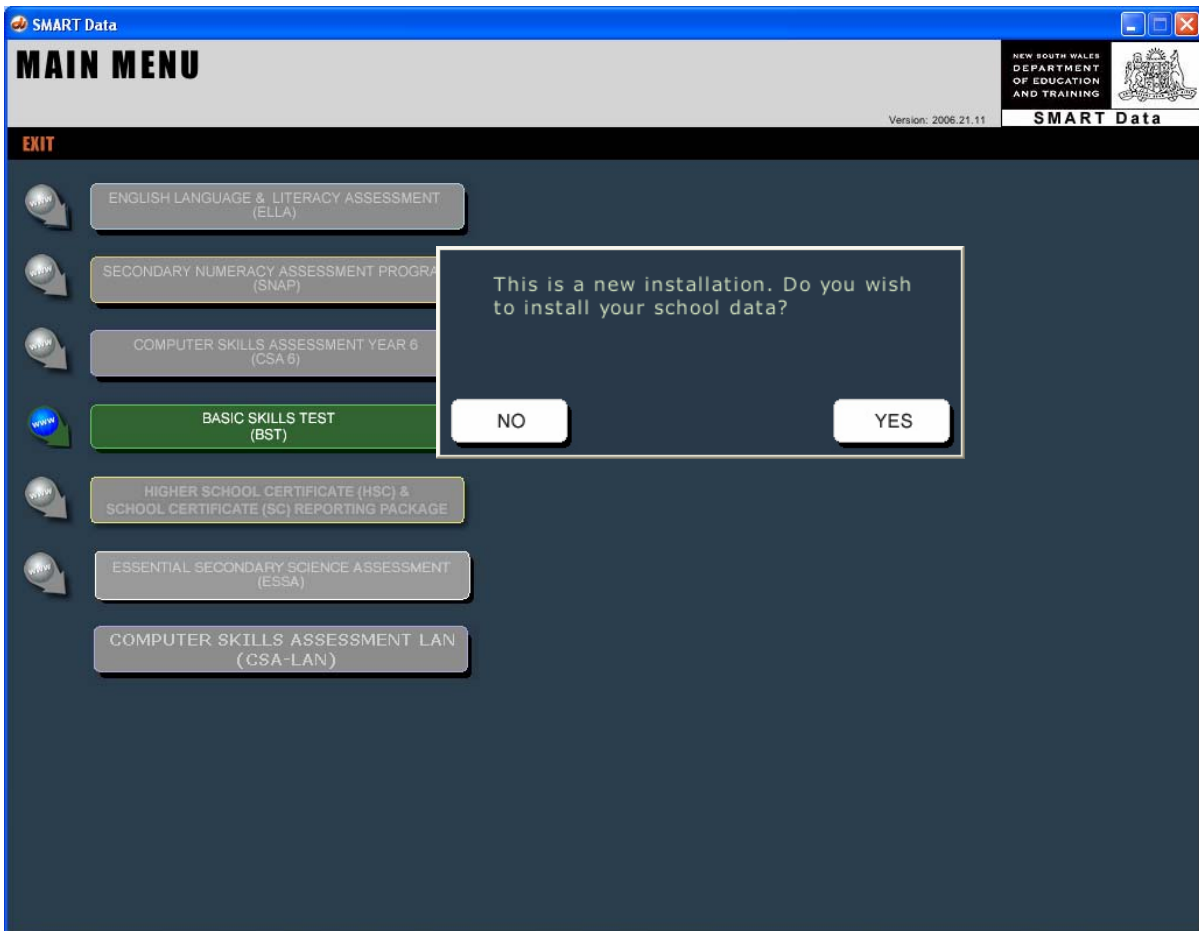
4. Click **OK**. Once extraction is complete the **SMART Data Installer** folder for the testing program you have selected will appear on the Desktop of your machine.
5. Open the **SMART Data installer** folder and click on **SMART Data Install**. The **ABOUT TO INSTALL** window will appear as shown.





Click **INSTALL**. When installation is complete, click **YES** to launch the SMART Data Software.

6. A system check is then performed. If the system check passes, the Main Menu will be displayed and a prompt window will appear asking if you would like to install your school dataset. Click **Yes**.

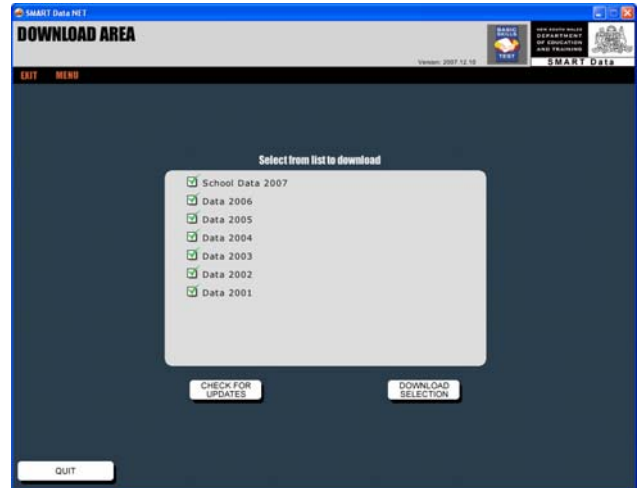


## **Part 2 Downloading school data into your analysis software package**

7. The Net Browser and Data Installer window will appear as shown below.

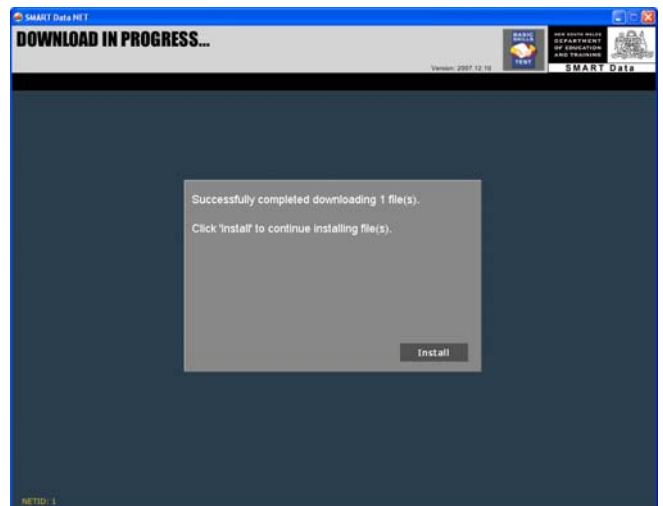
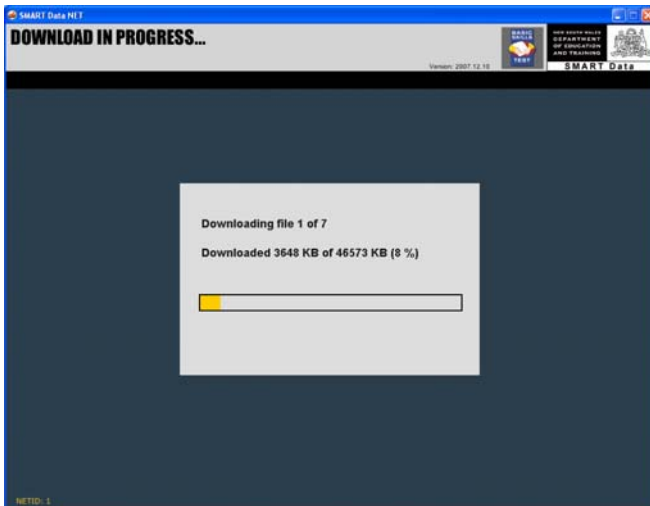
If you are a **government school only** enter the **web password** at this stage and **click on check password**.

If you are a **non-government school** you are required to enter your web password Computer Username and Computer Password then click on check password.

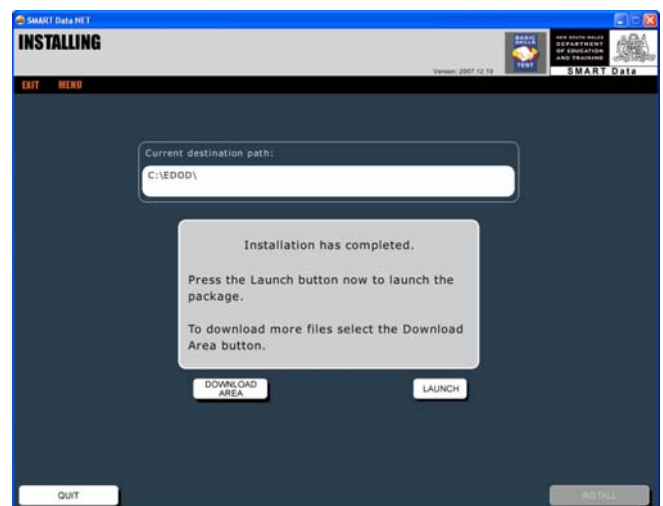
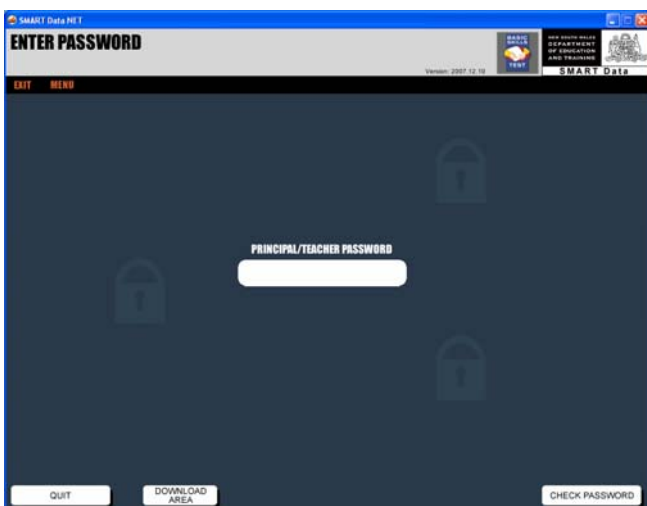


Note: If you are experiencing problems at this point you may be required to enter your proxy server settings, contact data.smart@det.nsw.edu.au for more information about your proxy settings.

8. Click **DOWNLOAD SELECTION** to begin downloading as shown above. This download selection may take some time, depending on your Internet connection.
9. When download has been completed successfully, click **INSTALL** as shown below.

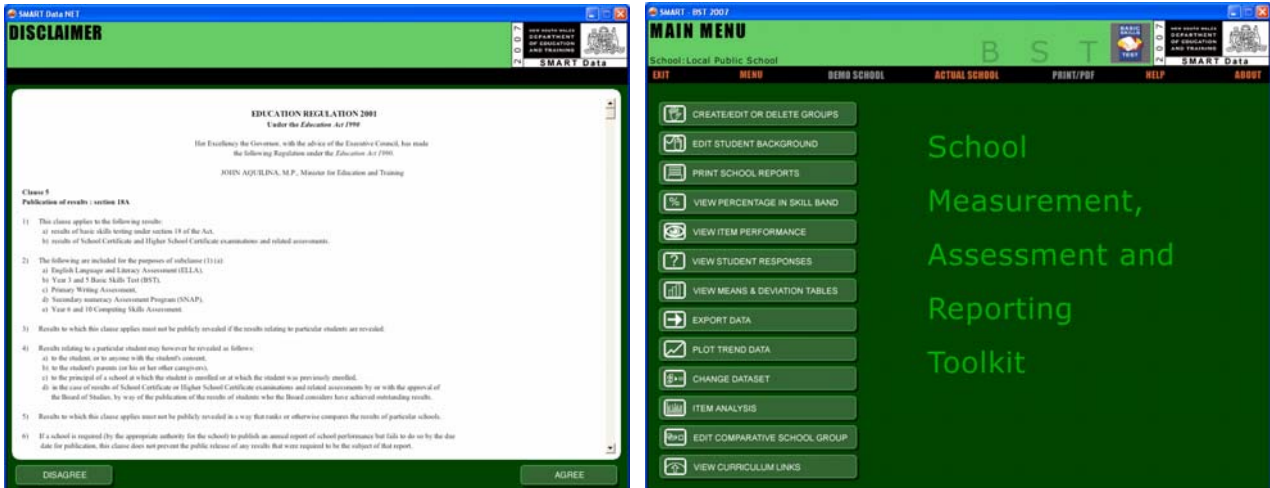


10. Enter **Principal or Teacher password** and click on **CHECK PASSWORD** as shown below.
11. After your password has been validated the Installing screen will display as shown below.



Click **LAUNCH** to continue.

12. The Disclaimer with the Education Regulation will appear. **AGREE** to this to continue to view the results you have requested.



You have now installed your **SMART Data** software analysis package and school data.

For future access to this software, double click on the **SMART DATA** icon which should be on your desktop as shown below. You will be requested to enter your Principal or Teacher password to access the package.



If you cannot find this shortcut, you can also access the program from the EDOD folder in the location you installed to by clicking on the **EDOD.exe** as outlined below.

