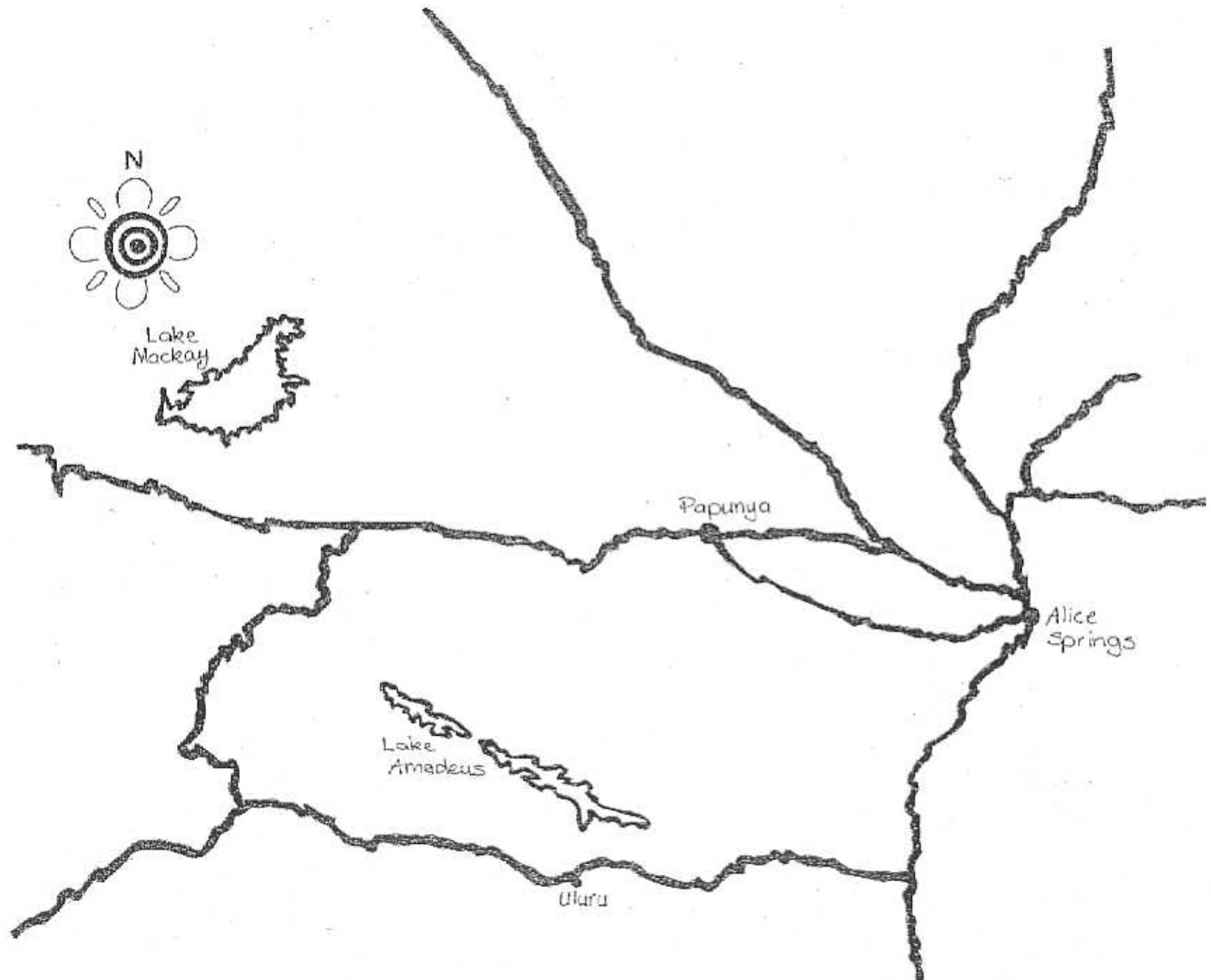
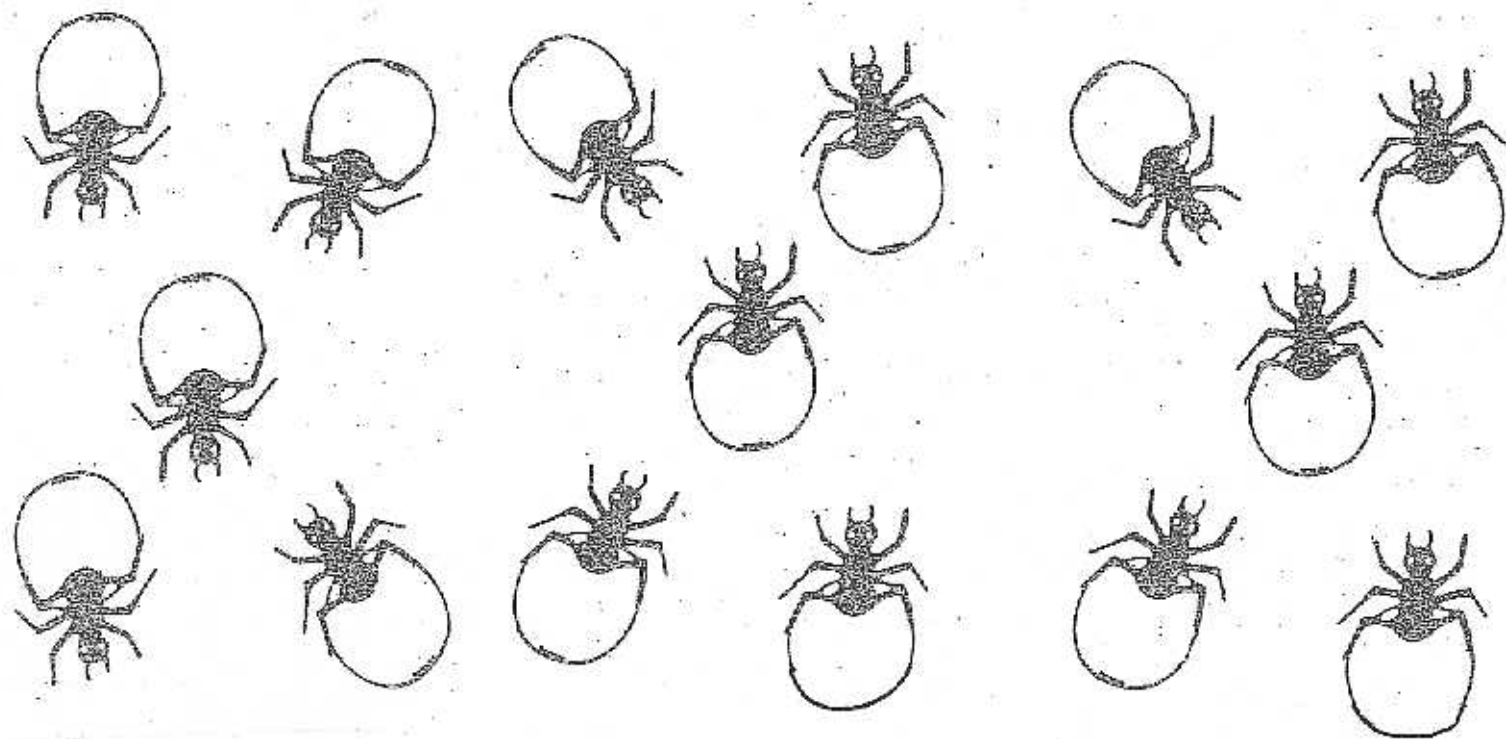


Rap sheet 1 for Rap point 1: Outline map (page 1 of 2)



Adapted from pp 2-3, *Papunya School book of country and history* by Papunya School. Published by Allen and Unwin, 2001.

Rap sheet 1 for Rap point 1: Honey ant labels (page 2 of 2)



*Connie Alser.*

\*Print and cut out some honey ant labels. Write each Language group on a honey ant label and position the Language groups on the map as described in the Program and planning teaching ideas for Rap point 1.